

Project Number : R4 Pestfurlong Moss



Project Overview:

The project will employ a Landscape Restoration officer who can co-ordinate and promote all landscape restoration projects within the Carbon Landscape and work with partners and other land managers to develop further physical landscape improvements as identified through the Steering Group and Technical Group. The project will provide clear benefits for the conservation and enhancement of the natural heritage of the Carbon landscape and provide opportunities for volunteers and students to engage with the process.

Project lead organisation and other organisations involved: Carbon Landscape Programme Team

Project Location: Carbon Landscape Boundary

Project dates: Mar 2017 – Sep 2022

Project Outputs

Measure	Target	Delivered	Notes
6 new projects developed	6	18	This includes 7 new project sites
£100,000 raised for new project activity	£100,000	£160,000	Funding came from Landfill Tax Fund,
200 volunteers engaged	200	630	
5 student placements created	5	5	
Additional outputs delivered			
Project Pipeline			Many sites now feature in the Great Manchester Wetlands project pipeline and are currently being worked up into deliverable projects.
9 Great Crested Newt Ponds Dug		9 pools	These were dug on New Moss Wood and Amberswood and have created opportunity not only Great Crested Newts but also for Sphagnum Moss and other bog plants to thrive and increase open water for invertebrates, notably dragonflies.
Management Plans for Friends Groups		2	Golborne High and Whitehead Hall Meadow

Reflecting on the last 5 years, what's the one thing that you're most proud of that has come from your project being part of the Carbon Landscape?

The sheer scale of the delivery has been incredible and triple of that which was originally envisaged. Two additional partners came on board as delivery partners through the Carbon Restoration project, The Woodland Trust and Cheshire Wildlife Trust. This has enabled two further mossland sites to be developed, increasing connectivity of the mossland landscape in and around the Manchester Mosses Special Area of Conservation.

The most successful project sites seem to be those where we have been able to deliver multiple Carbon Landscape projects simultaneously. Examples include New Moss Wood and Whitehead Hall Meadow, where we have layered Carbon trails, Sense of Place and Mossland Gateway projects on the original Restoration projects that we have delivered.

What difference has this project made to the cultural and natural heritage of Carbon Landscape?

Site	Delivery	Funder	Number of projects
Astley Moss	Bunding, Rewetting and Scrub removal to enhance SSSI	Heritage	1
LWM (species reintro)	Reprofiling, bunding and rewetting. Also planting all to support possible future reintroductions of Large Heath Butterfly	Veolia	1
Risley Moss	Support reintro of Large Heath and create pools for GCN	Veolia (species reintro) and Natural England District Level Licencing (pools)	2
Holcroft Moss	Removal of invasive Bracken, rewetting and Planting to support SSSI	Natural England, Highways England (now National Highways)	2
Whitehead Hall	Pool and wetland creations.	Enovert and Wigan Council	1
Amberswood	Mossland rewetting and planting. To connect fragmented moss and sand create Great Crested Newt pools	Heritage Fund and Natural England District Level Licencing	2
New Moss Wood	GCN Pools, mossland reclamation/creation, wetland habitat creation, planting and another phase of rewetting - wet woodland, bog and fen creation	Natural England District Level Licencing, Enovert, Salford Council 106 and DEFRA PCGS	3

Golborne High School	Rewetting a failed wetland - converting a hockey pitch into a thriving wetland. rewetting and planting, reprofiling	Golborne Community Fund and Wigan Council	1
Pestfurlong Moss	GCN Pools, mossland reclamation/creation, wetland habitat creation, planting and another phase of rewetting - wet woodland, bog and fen creation	Enovert, DEFRA PCGS, Natural England Seed Corn, Woodland Trust, Heritage Fund (Note second project has its own report)	1
Chat Moss	Plant reintroduction to peatlands	Peel	1
Moss Brook Growers	Planting and pool creation	Heritage Fund	1
Park Moss	mossland reclamation/creation, wetland habitat creation, planting and another phase of rewetting - wet woodland, bog and fen creation	Heritage Fund, DEFRA PCGS, Woodland Trust, Natural England Seed Corn	2

The project has benefited our environment, notably the storage of water, with more wetland sites, the flow of water reaching rivers and urban areas has been slowed. A number of sites are mosslands and have involved large scale rewetting works. This work will not only benefit a suite of rare wildlife including Reptiles, amphibians and invertebrates and plants but also combat climate issues such as carbon and flooding.

The project enabled some explorative peatland restoration techniques to be used. On New Moss Wood we removed Victorian night soil that was deposited on the site hundreds of years ago to enable crop production. The enriched soil was removed and the peat revealed. This bare peat was then rewet and bog plants reintroduced, only taking 2 years to show real results!

The work has engaged communities, an example of this would be the wetland creation at Golborne High, where staff, pupils and an eco-group from Goldborne High. The CL have built on work by Murphy's, to restore an ex hockey pitch into a thriving wetland, which is now used as an outdoor classroom.

What difference has this project made to people?

The Carbon Restoration work is actively addressing both the Climate and Biodiversity crisis's that we are faced with today. The 18 projects that have been delivered through this project has helped natures recovery on a landscape scale, delivering the Lawton principles of more, better, bigger, more connected.

Nationally and even globally, restoring wetlands benefits our climate in a number of ways, notably reducing carbon emissions and storing/cleaning water.

Many of the Carbon Restoration sites are open to the public. This gave us the perfect opportunity to engage with the general public, local communities and site visitors through 1-1 meetings on site and/or through interpretation and art.

Christine Elding (Whitehead Hall Meadow)

“ I would like to thank everyone involved in the Carbon Landscape Project for their support of the Trustees of Whitehead Hall Millennium Green. We have been a partner of Carbon Landscapes for some years and would not have achieved so many improvements to our site without the partnership”

Useful Links

www.carbonlandscape.org.uk

Future Plans and Legacy

The Carbon Restoration project was so successful, a number of partners had highlighted further projects, that we simply just didn't have the time to deliver. These are now sitting on the Great Manchester Wetland Project Pipeline and are currently being developed into deliverable projects.

A paper that outlines our achievements on New Moss Wood has been released by CIEEM. This knowledge share will upskill organisations delivering similar peatland restorative works and provide the evidence that this method can work.

New Moss Wood, Pestfurlong Moss and Holcroft Moss are all part of numerous GM Wetlands species reintroduction projects and also of great interest for their potential of delivering environmental and biodiversity benefits, being peatland sites.

Lessons learned?

The nature of the Carbon Landscape Restoration project has enabled projects to be continually developed, throughout the life of the 5 year project. The benefits of this include more time to identify, develop and deliver projects, which helped when working with organisations with complex internal structures, such as Forestry England. Another benefit was that our work could align with what funding was available at the time. An example of this is the pools and wetlands that were created through the NE GCN District Level Licencing, this fund was not available during the early part of the project, however supported habitat creation later on.

The strength of the partnership really shone through this project and although coordinated by the programme team, the work was made possible by the wealth of experience and knowledge that the partners brought.

Photographic Evidence



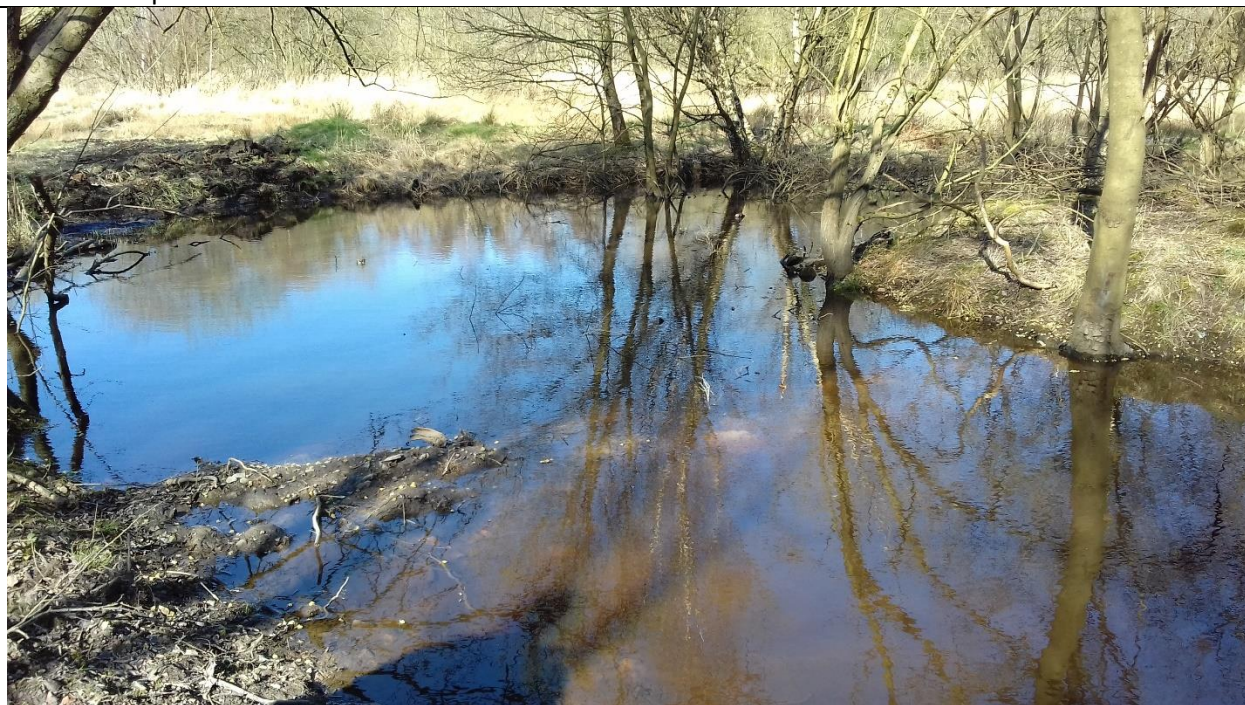
Golborne High Wetland that is now used by the community, the schools eco group and the pupils as an outdoor class room



New Moss Wood Bog. This was originally a field of Nettles and Yorkshire Fog Grass, converted into a bog through turf stripping and bunding. The white seeds are from the Cotton Grass plant, which now thrives in the wet conditions.



Holcroft Moss, where invasive Bracken has been removed and a bund built to hold water on the mossland. This area has then been planted with Cotton Grass and will benefit the SSSI mossland and associated species.



This was a large void located between two mini mosslands on Amberswood in Wigan. Using dams and reprofiling techniques, we were able to block the drainage and create a lovely area of wet woodland. This also greatly improved the hydrological function of the mini mosslands which improved conditions for rare plants.

Funding Partners



Salford City Council



Department
for Environment
Food & Rural Affairs

