

Project Number : C6 Carbon Clever



Project Overview: Carbon Clever will provide a variety of learning and engagement activities for children of primary school age. The project will help the project partners instil local pride, connect children with their landscape and increase awareness and interest in the restoration of the Carbon Landscape. It will also enable teachers to deliver the curriculum in an interesting and exciting way that draws on the unique characteristic of the local environment.

Project lead organisation and other organisations involved: City of Trees

Project Location: Various

Project dates: June 2017 onwards

Project Outputs

Measure	Target	Delivered	Notes
40 school packages arranged	40	??	Face-to-face delivery had to stop in early 2020 and it was agreed that resources could move online
1,200 pupils engaged in the project	1,200	807	Face to Face workshops had to be put on hold during the pandemic and were hard to get restart once schools reopened due to restriction.
6 sites accessed by local school children	6	10	St Teresa's RC Primary in Irlam to Little Woolden Moss Oakwood Academy visited Little Woolden Moss Cadishead Primary School to New Moss Wood St Peters Primary to Amberswood Westy - Cardinal Newman Secondary School Golborne High School created their own wetland Gorse Covert Primary School visited Risley Moss Hope School visited Three Sisters Leigh College visited Pennington Flash Lowton High Eco Club
40 teachers trained to use the resources and RoundView	40	10	Inset Day with Laudato Si Centre

Reflecting on the last 5 years, what's the one thing that you're most proud of that has come from your project being part of the Carbon Landscape?

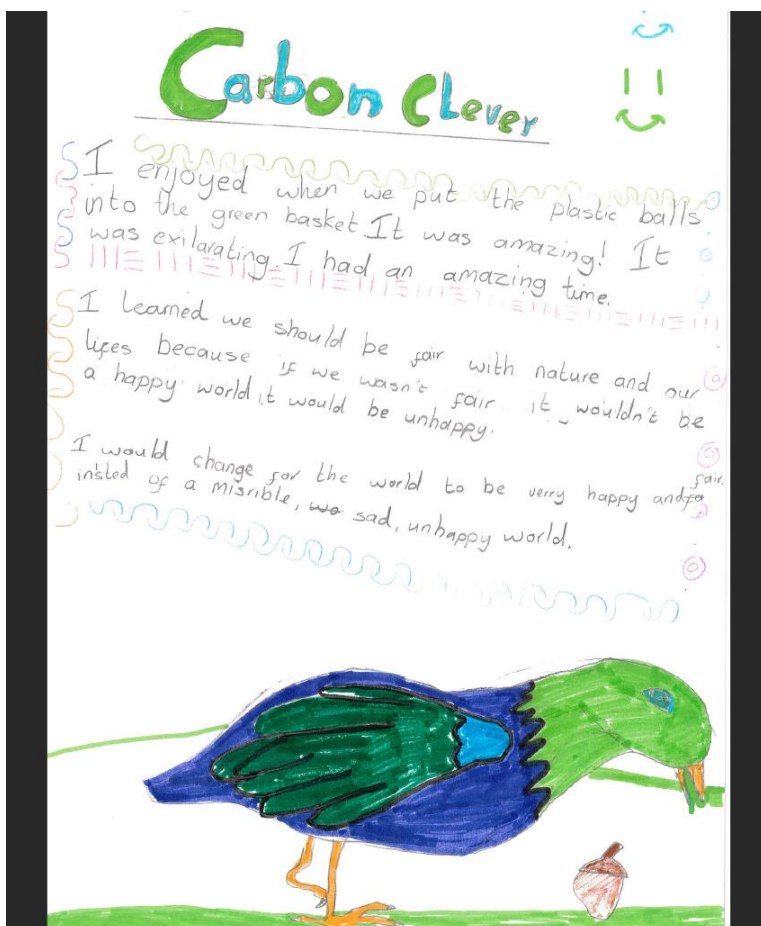
To our knowledge this is the first time such a comprehensive range of digital school resources has been created by a Landscape scale partnership. These resources are so diverse because they have been created through a process of co-production of staff, partners, community groups, disability groups, Friends groups and what has worked in schools. They have also been tested by pupils and teachers to create a robust and relevant package that will inspire about the landscape for years to come. When pupils were met over multiple sessions e.g. the Eco Team at Lowton High, significant co-production began to happen.

“When the landscape generates an emotional connection for pupils that is when social change happens. It not only effects them at school but their peers, families and wider community”



Professor Jiggett of Yan Tan Tethera (Oliver Bishop) leading games around sustainability.

What difference has this project made to the cultural and natural heritage of Carbon Landscape?

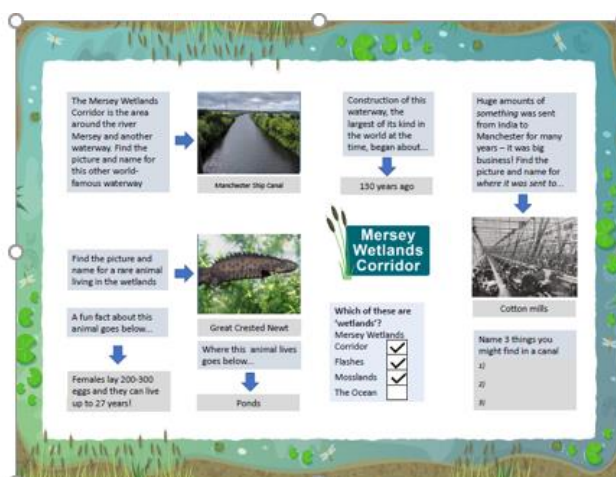
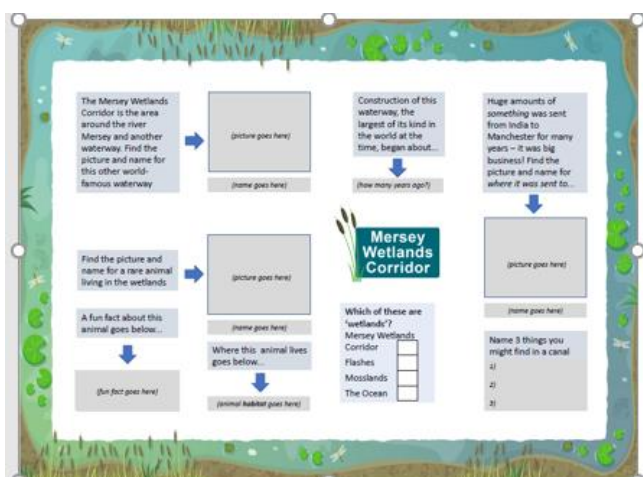


Feedback from pupils and teachers was very positive in the sessions delivered before the pandemic.

There is a latent demand for the resources of the Carbon Landscape as shown through Wigan school Eco conference Thursday 11 October 2018.

This has led to forging strong relationships with the education team at Wigan Council. They have networks that can support the dissemination about the online resources.

A sample of the free, downloadable worksheets (and the answer sheets that guide teachers through the sessions), developed by Fraser How of the RoundView project, is shown below.



Aimed primarily at primary school children there literally is a digital resource to cater for every taste and learning need including audio and kinetic learners. For example, using the RoundView has set the local landscape to inspire future action towards sustainability. A series of hands-on games have been developed, which will be piloted in schools, galleries, museums and visitors' centres in partnership with the UNESCO UK Commission in 2023.



RoundView – download and print out resource pack (link to follow)

RoundView Game – (link to follow)

First installation of the RoundView games at Quarry Bank Mill, National trust.

Photograph copyright David Watson.

Concept by Dr Joanne Tippett and Fraser How.

Carbon Clever Package for Key Stage 2, Outdoor games:

Yan Tan Tethera, Professor Jiggett how to play classroom games:

Lesson plan and all videos can be accessed here:

<https://www.carbonlandscape.org.uk/carboncleverchallenge>

- Carbon Clever, Learn about Flashes https://youtu.be/Wc_JRkbiyK8
- Carbon Clever, Learn about the Mosslands <https://youtu.be/InYvHt4Rftw>
- Carbon Clever, Learn about Wetlands <https://youtu.be/viYBHywSVxM>

Carbon Clever Classroom Package for Key Stage 2:

Lesson plans and resource pack <https://www.carbonlandscape.org.uk/carbon%20clever>

The Landscape Adventurers Scheme including certificates

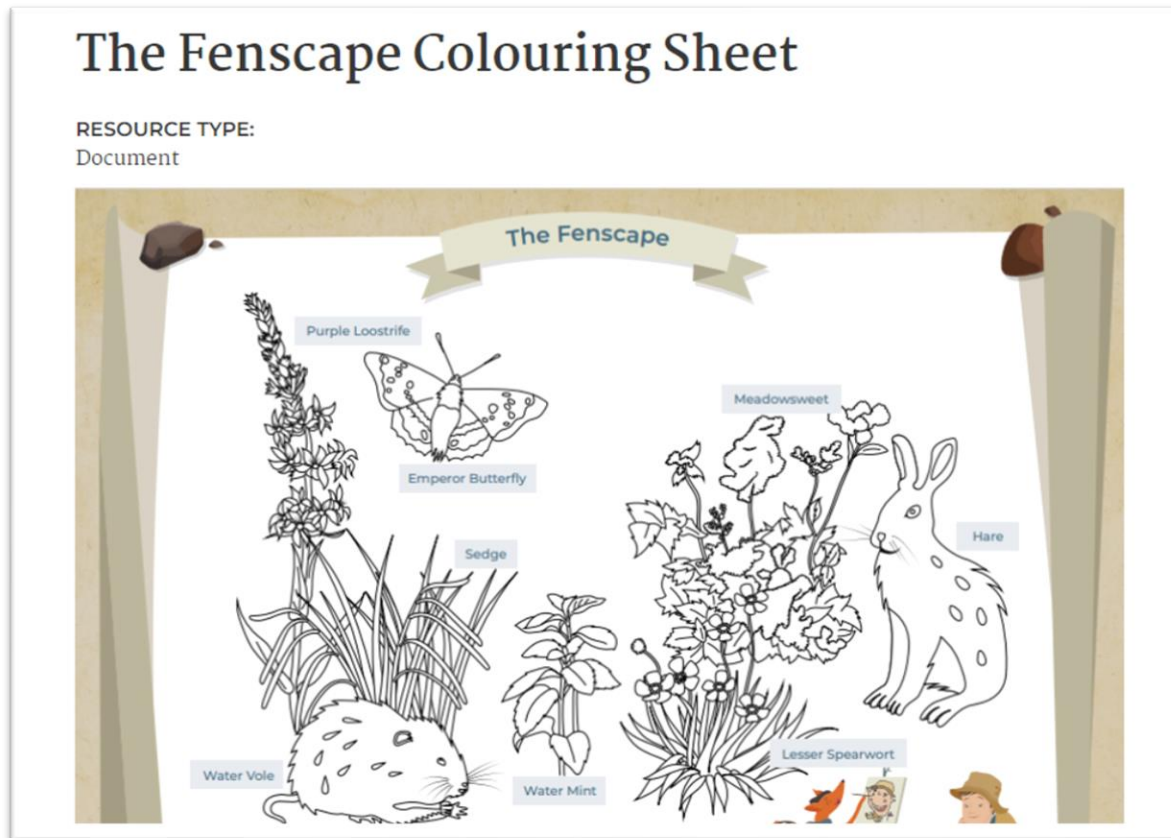
www.carbonlandscape.org.uk/resources/landscape-adventurers/landscape-adventurer

Fun videos www.carbonlandscape.org.uk/resources/landscape-adventurers/vdeos including the amazing Yan Tan Tethera Reintroduce Your Love <https://youtu.be/gcxE8BPL6nk>

Interactive computer games Who's hiding in the wetland, woodland or mossland?

www.carbonlandscape.org.uk/resources/landscape-adventurers/whos-hiding-games

Colouring sheets www.carbonlandscape.org.uk/resources/landscape-adventurers/colouring-in-sheets



Games including word searches and top trumps

www.carbonlandscape.org.uk/resources/landscape-adventurers/other-sheets

Finding wildlife - the Augmented Reality app to see wildlife through your mobile phone which can also be used in the Classroom. For non AR enabled mobiles it is possible to just listen the community co-produced scripts www.carbonlandscape.org.uk/soundbites

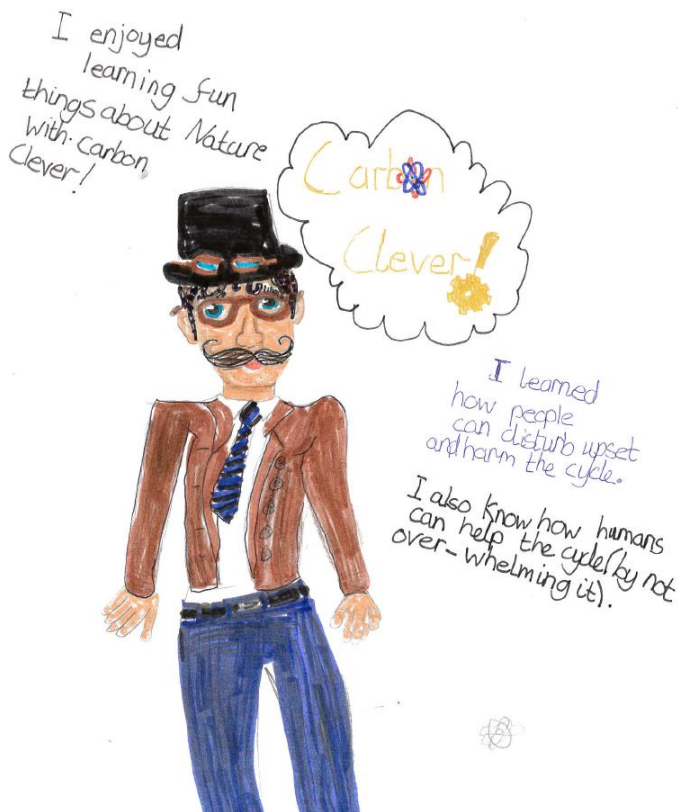
Beat Stress with Nature - www.carbonlandscape.org.uk/beat-stress-nature

360 film for experience through VR headset to enable those with sensory needs to experience the outdoors www.carbonlandscape.org.uk/360-vr-film

Key Stage 1 Waterways with links to the Carbon Landscape
www.carbonlandscape.org.uk/waterways

Key Stage 2 Heritage Lesson plan with links to the Carbon Landscape
www.carbonlandscape.org.uk/local-heritage-lesson-plan

What difference has this project made to people?



Prior to the pandemic:

“I enjoyed all the games and the learning because it taught us a lot about nature and wildlife which is something I care strongly about”. Pupil KS2.

The visits brought the theory to life.

“We weren’t sure what to expect and to be honest thought that mosses and peat sounded a bit boring – but the children have had an amazing time and are very interested and have learned a lot” School teacher after visit to a Mossland.”



Pupils from St Teresa’s Primary School, Irlam. Photo credit Lancashire Wildlife Trust with permission from the school.

When schools visit nature reserves, there is an immediate transformation from initial reticence. First experiences of nature are critical for young children, especially those living in urban areas or with high Index of Multiple Deprivation. Organising trips is a way to explain the wildlife and to care for their landscape for their lifetime. Transport is always cited as the number one barrier. Thankfully, approximately fifty schools / colleges are within walking distance of the Carbon Landscape wetland nature serves.

A teacher training inset day branded as “the Climate Response Inset day” happened at the Laudato Si Environment Centre Salford in June 2022. The Laudato Si wider initiative was set up by the Bishop John of the Salford Diocese Roman Catholic church. Laudato Si oversee 34 Secondary Schools and 171 primary schools who we will encouraged to use the resources. This has backing with wider partners including the RoundView Team, Yan Tan Tethera, Education Team at Wigan Council and DEFRA-backed Nature Friendly Schools.

- St Wilfrid’s Primary School - “lots to take away and engaging”
- St Gabriels Roman Catholic High School - “very useful to see how to incorporate different games and different activities into the curriculum” “Maybe more ideas for ks3/ks4- some of the activities more suitable for primary rather than secondary but could be adapted”
- Recycle Bees Limited - “Brilliant, really interested in helping you develop your educational ideas through your settings. I currently work with schools all year round and am connected with 8” (schools)
- “Event was advertised through the Diocese ...” “really good package of learning that can be applied and adapted across the curriculum” “Clear plans and outcomes”

- The Cathedral School St Peter and St John RC Primary - “The carbon clever programme looks fantastic and I am very keen to get back to school, share and try out the resources” “It was great to have a hands on activity to ‘break the ice’ and get into role as the children by actually playing the game”
- St Joseph’s RC Ordsall “useful to hear from all different companies/people and what they have to offer”
- St. Thomas of Canterbury “very useful- a lot of resources and examples to follow up on” “Possible shorter lesson plans” “Other school visit opportunities”

Useful Links

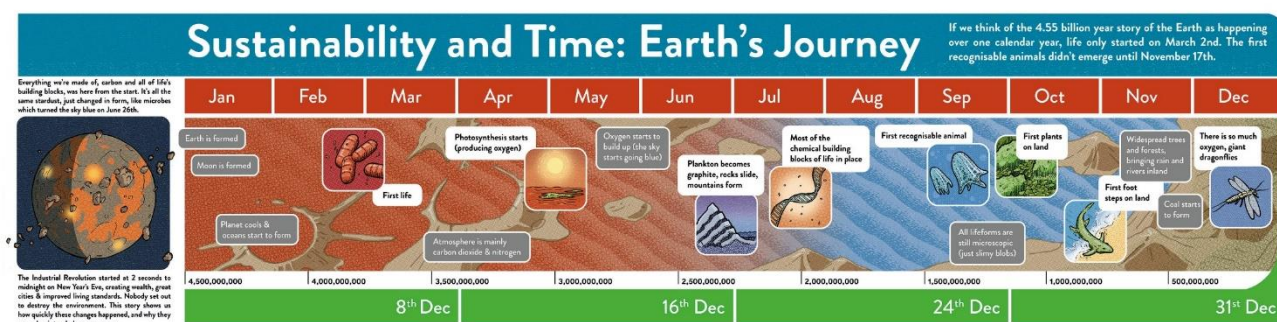
Links to follow after feedback from inset day to just have a “one-stop-shop” for teachers so currently undergoing review.

<https://www.carbonlandscape.org.uk/carbonclever>

www.carbonlandscape.org.uk/carbon-clever-risk-assessment-template

Future Plans and Legacy

This project adapted since covid has meant it is nigh impossible to get into schools. Agreed with Heritage Fund, the focus changed to developing off the shelf free digital resources that enable teachers to deliver the curriculum in an interesting and exciting way that draws on the unique characteristic of the local environment. The real challenge will be spreading the word with the intention to post a RoundView Story of the Earth poster to every primary school within walking distance of a wetland site (approximately 50 schools). Sample shown below, illustrator HimHallows.





Lessons learned?

Some of the resource development time was not properly budgeted for at the beginning of the project and relied on goodwill when professional resourcing was needed. The offer was, at times difficult to explain to schools as it was outside their comfort zone. With the initial booking system, there were several subcontractors, the complexity of booking liaising proved difficult.

For all landscape partnerships it would help to have a clear “offer” for schools at the outset comprising:

- short lesson plans
- links to the curriculum
- risk assessments
- offer of taking children out in the landscape.

If not within easy walking distance laying on free transport will address the biggest barrier, especially for schools serving neighbourhoods with high Index of Multiple Deprivation although there may be opportunities with Pupil Premium.

According to leading child psychologist Piaget children only enter the “formal operational” stage of understanding the world through hypothetical thinking and scientific reasoning from twelve-year onwards, so inevitably so to become more technical will support work in secondary and college settings. Primary school teachers giving their feedback were only brought in within the last year of the project and could have benefitted from being involved in this co-design earlier.

Funding Partners

